

# Quality Aluminum Sand Castings

## GLOBAL MARKETS

Boose supplies aluminum sand castings to both Commercial and Government markets.



Medical Equipment



Power Generation



Construction Equipment



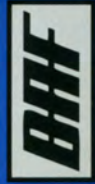
Fire Service



Tool Manufacturing



Ornamental & Recreational



Boose Aluminum Foundry Co., Inc.  
Boose At Cornwall Co. 

MARKETS

ISO COMPLIANT



For more information, watch our video, submit an inquiry, or find your closest sales representative, call (717) 336-5581 or visit:

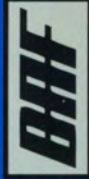
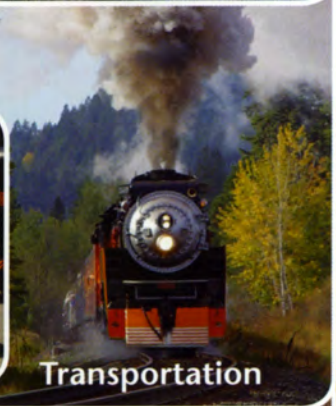
[www.BooseAlum.com](http://www.BooseAlum.com)

[www.BooseAtCornwall.com](http://www.BooseAtCornwall.com)

# Quality Aluminum Sand Castings

## OUR MISSION

We are dedicated to the engineering, manufacturing and marketing of high-quality aluminum sand castings while maintaining a safe teamwork environment with continued service to our customers, the community, and the foundry industry.



MARKETS

Boose Aluminum Foundry Co., Inc.  
Boose at Cornwall Co. BAC

ISO COMPLIANT



**Boose Aluminum Foundry Co., Inc.**

PO Box 261 • 77 N. Reamstown Road

Reamstown PA 17567-0261

P: (717) 336-5581 F: (717) 336-4370

E: baf@boosealum.com

**Boose at Cornwall Co.**

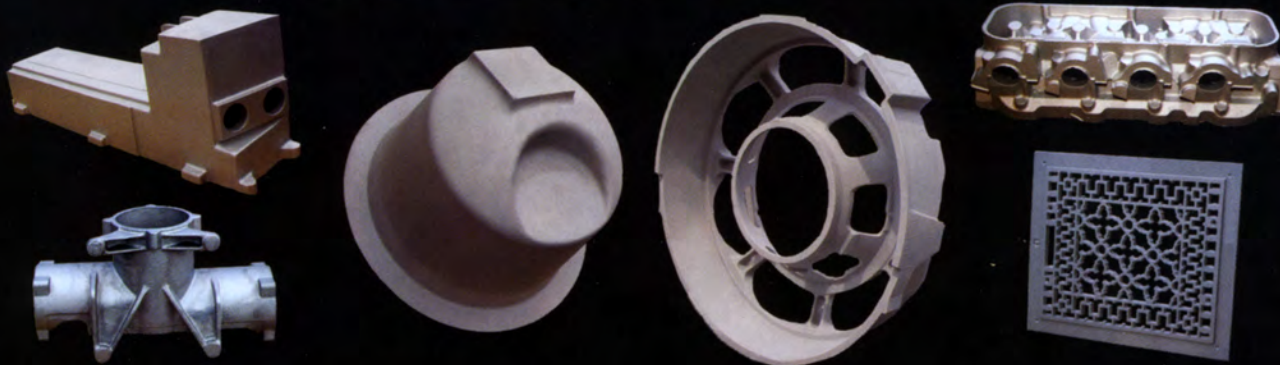
402 Schaeffer Road

Lebanon PA 17042-8876

P: (717) 272-9775 F: (717) 274-0212

E: bac@booseatcornwall.com

# Quality Aluminum Sand Castings



**QUALITY**

## QUALITY SERVICES

Through our Quality Management System, Boose incorporates quality control into every phase of the production process to ensure that your castings meet your exact specifications. Our commitment to quality control is your assurance of quality products. For a full listing of specifications that Boose complies with, please visit either of our websites: [www.BooseAlum.com](http://www.BooseAlum.com) or [www.BooseAtCornwall.com](http://www.BooseAtCornwall.com)

### RADIOGRAPHY

Digital and Film Radiography; Thickness 5.5"

### CHEMICAL & PHYSICAL TESTING

All metal heats are sampled verifying metal chemistry through spectrometry, as well as metal strength and elongation through tensile test

### LIQUID PENETRANT TESTING

Fluorescent dye penetrant, water washable type 1, method A, level 1 sensitivity

### COMPLETE LAYOUT

Layout reports verifying all print dimensions

### SAND TESTING

All molding sand systems are tested on a rigorous schedule

### PRESSURE TESTING

Helium and air pressure testing to ensure leak-proof parts

### HEAT TREATMENT

All alloys requiring heat treatment and quenching are handled in-house in our calibrated furnaces

### WELDING

Certified welders used for weld repair; weld sketches are sent to customer for prior approval



**Boose Aluminum Foundry Co., Inc.**  
**Boose At Cornwall Co.**

ISO COMPLIANT



### Boose Aluminum Foundry Co., Inc.

PO Box 261 • 77 N. Reamstown Road

Reamstown PA 17567-0261

P: (717) 336-5581 F: (717) 336-4370

E: [baf@boosealum.com](mailto:baf@boosealum.com)

### Boose at Cornwall Co.

402 Schaeffer Road

Lebanon PA 17042-8876

P: (717) 272-9775 F: (717) 274-0212

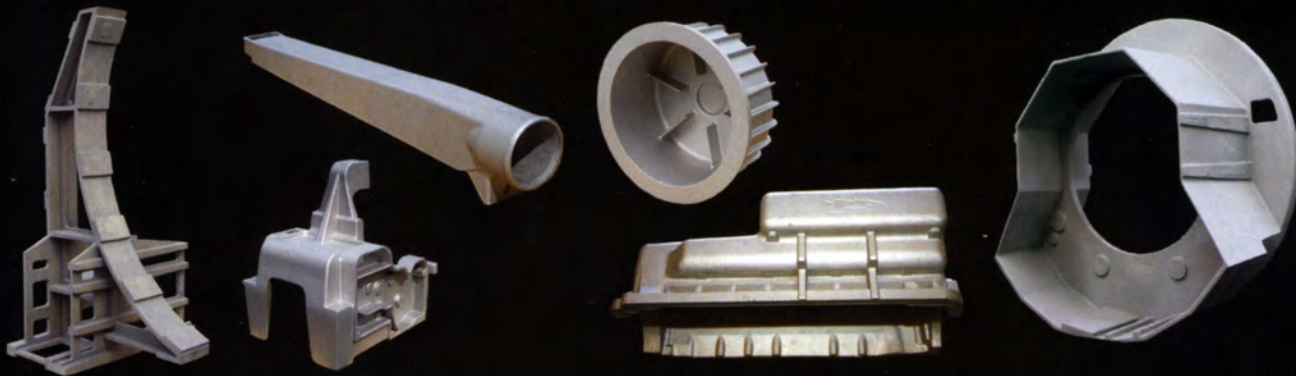
E: [bac@booseatcornwall.com](mailto:bac@booseatcornwall.com)

# Quality Aluminum Sand Castings



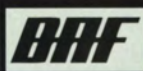
**Boose Aluminum Foundry Co., Inc.**  
**Boose At Cornwall Co.**

**CAPABILITIES**



## MANUFACTURING CAPABILITIES

The unique value in the customized services we offer starts with dedicated people who have extensive industry knowledge and take a genuine interest in the success of your project. Our goal - our only goal - is to ensure complete customer satisfaction.



### CASTING CAPABILITIES

1/2 oz to 2,000+ lbs

One piece orders to high-quantity runs



1/2 oz to 100 lbs

### ALLOYS POURED

|          |      |
|----------|------|
| SR319    | 771  |
| 356/A356 | 713  |
| A357     | 535  |
| C355     | A206 |

|          |
|----------|
| SR319    |
| 356/A356 |
| 535      |
| 713      |

### MOLDING EQUIPMENT

40 x 40 Cope & Drag  
 No-Bake Floor  
 Squeezers  
 Rotolifts

30 x 32 Hunter  
 20 x 24 Sinto  
 14 x 19 Hunter

### CORE EQUIPMENT

Shell  
 Cold Box  
 No-Bake  
 Bench-Oil Sand

Shell  
 No-Bake

### PATTERN SHOP

Complete In-House Capabilities

### HEAT TREATING

Certified Heat Treat & Quench

### ELECTRONIC FILES

Boose operates on Solid Works 2011, which accepts most major electronic submission formats



ISO COMPLIANT



For more information, watch our video, submit an inquiry,  
 or find your closest sales representative, call (717) 336-5581 or visit:

[www.BooseAlum.com](http://www.BooseAlum.com)

[www.BooseAtCornwall.com](http://www.BooseAtCornwall.com)